

iLaser 1

The World First Smart
Triple Wavelength Diode Laser



- **Blue Wavelength 450nm**

- Tooth Whitening**

- Hemostasis pretty high photon energy for activating the molecules of whitening gel
 - Efficiency of all dental diode laser

- **Infrared Wavelength 980nm**

- Soft tissue surgical procedure, Endo & Perio**

- Efficiency and Coagulation (Hemostasis) at very low power settings
 - High efficiency of anti-bacterial and anti-inflammatory
 - High power laser treatment(HPLT)
 - Pain reduction in TMJ

- **Red Wavelength 650nm**

- Photobiomodulation**

- Perfect for Photomodulation(PBI)
 - Low Level Laser Therapy(LLLT)
 - Faster Wound Healing
 - Pain-free Dental Treatments



Specialty	Periodontic Germ Reduction	450nm	650nm	980nm
Periodontology	Periodontic Germ Reduction			★★★★
	Peri-implantitis			★★★
Endodontics	Root Canal Disinfection			★★★
	Pulpotomy			★★★★
Oral Surgery	Abscess			★★★★
	Fibroma	★★★★		★★
	Frenectomy	★★		★★★
	Gingivectomy/Gingivoplasty	★★★★		★★★
	Implant Exposure(second stage)	★★★★		★★★
	Crown Lengthening	★★★★		★★
	Incision/Excision	★★★★		*
	Hemostasis	★★★★		★★
	Wound Healing	★★★		★★★★
Other	Aphthous Ulcers		★★★	★★★★
	Desensitization		★★★★	*
	Tooth Whitening	★★★★		★★
	TMJ Disorders		★★★★	★★



Personal Laser Device

No external power cord or foot pedal needed during use—increases mobility & portability. (You can also connect a laser launch pedal, there are two modes to choose freely) The built-in long-life lithium battery can last for one month on a single charge.

7 inch Touch Screen:

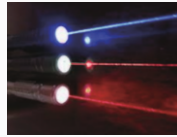
Works with wet hands & medical gloves

Multifunctional

More than 10 built-in preset programs

Triple Wavelength

450nm + 650nm + 980nm



Easy to operate

Handpiece has power adjustment button

• Fiber Optic Tip Models of Dental Diode Laser



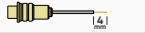



Whitening Handpiece for Teeth

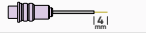


Whitening/bleaching. treats an entire quadrant consistently and comfortably



TMJ Handpiece

For pain management in TMD

Non-initiated	Models	Length	Intended
	F4-4	400um	4 Surgery
	F4-7	400um	7 Periodontal
	F4-9	400um	9 Periodontal
	F2-14	200um	14 Periodontal
	F2-20	200um	20 Root Canal

Pre-initiated	Models	Length	Intended
	PF4-4	400um	4 Surgery
	PF4-7	400um	7 Periodontal
	PF4-9	400um	9 Periodontal

Disposable Tips Available in two different sizes: 200um 400um

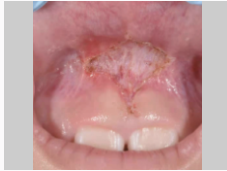
• iLaser in Practice

Frenectomy

- Interventions involving low levels of pain and bleeding
- Immediate hemostasis
- No sutures and less scars, accelerated wound healing
- Often no more than surface anesthesia required, virtually no post-operative discomfort



Before



Directly After



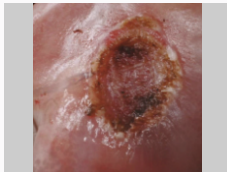
Healing

Proliferative Excision

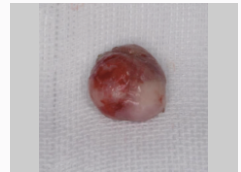
- Removal of the mucosal lesion
- Direct coagulation without sutures
- Non-irritated wound area with no secondary bleeding
- Reduced scar formation



Before



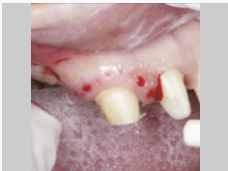
Directly After



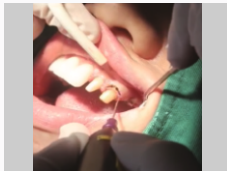
Healing

Gingivoplasty

- Easy visualization of clean contours



Before



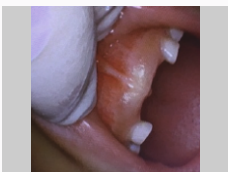
Directly After



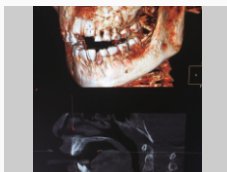
Healing

Help to sprout

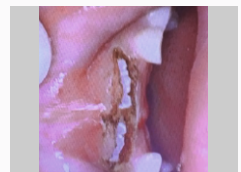
- No need to bleed and stitch
- Easy to help teeth grow



Before



Directly After



Healing

Specifications

Wavelength	450nm/650nm/980nm
Wavelength & Max. Power	450nm: 3W CW; 5W Pulse 650nm: 400mW CW 980nm: 8W CW/Pulse
Emission Mode	CW/ Pulse
Medium	InGAsP Diode
Optic Fiber Diameter	200/400um
Pulse Width	10us 900ms
Super High Frequency	50KHz
Display	7" OLED Touch-Screen
Dimension	190mm*155mm*260mm
Weight	1.5Kg
Aiming Laser Wave Length	650nm
Battery	Built-in Rechargeable Li-ion
Battery Capacity	7200mAh